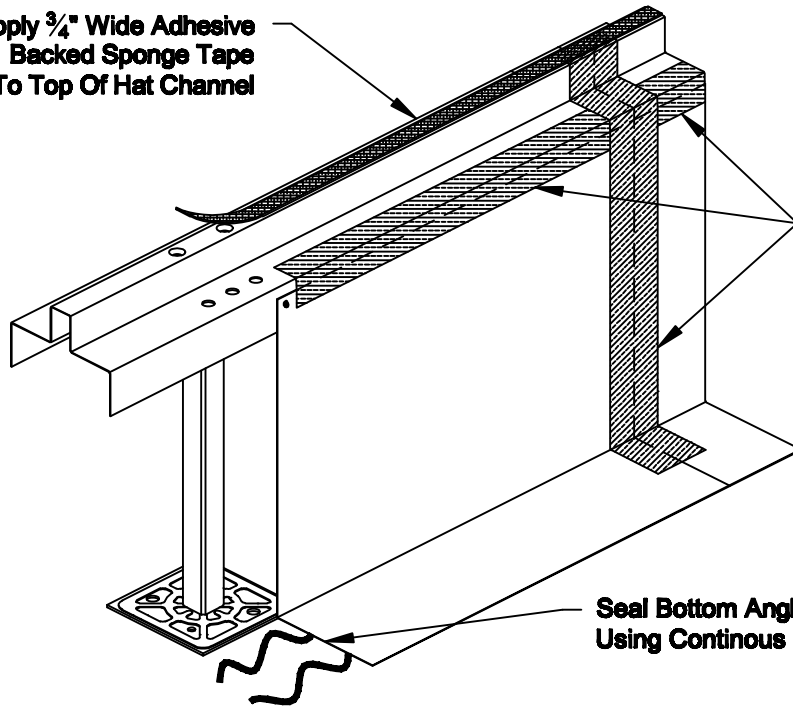


Apply  $\frac{3}{4}$ " Wide Adhesive Backed Sponge Tape To Top Of Hat Channel



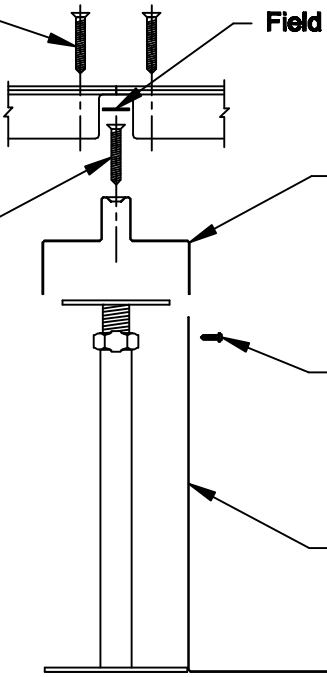
Tape All Joints And Seams With Metal Foil Duct Tape At Overlap Of Bottom Angle Sections And Where Bottom Angle Meets Hat Channel

Seal Bottom Angle To Slab Using Continous Bead Of Caulk

Corner-Lock Fasteners Where Applicable

Field Applied Gasket

Attach Hat Channel To Pedestal Head With 1/4-20 Stringer Screws

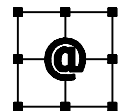


Hat Channel Hot Dip Galv. Steel 8 Ft. Long Sections

Fasten Hat Channel To Bottom Angle Using Tek Screws Or Pop-Rivets

Bottom Angle 0.024" (0.6 mm) Thick Hot Dip Galv. Steel

NOTE: Cut-Sheet drawing and specifications are subject to change without prior notice.



**ASM Modular System Inc.**<sup>®</sup>

9500 Industrial Center Dr.  
Ladson, SC, 29458

www.asmproducts.com

Tel: 843-534-1110  
Fax: 843-534-1111

## AIR PLENUM SEALING PLENUM DIVIDER DETAIL

9/08

CS - 9730